



BRUSHLESS

LONGNECK

Longneck angle grinder

For precise cutting right into corners with a cutting depth of 14mm.
Unsurpassed versatility thanks to longneck gear head made of die-cast aluminum.

Description

Technical data

NO

LHW	 230 V  100 W  16.000 ^{max}  CASE	28 547
LHW/BL BRUSHLESS	 230 V  250 W  16.000 ^{max}  BOX	29 202
LHW/A	 10.8 V  2,5 Ah  16.000 ^{max}  CASE	29 815
LHW/A Solo (without battery and charger)	 10.8 V  16.000 ^{max}  BOX	29 817
Longneck-Set BRUSHLESS LHW/BL and LWB/BL in L-BOXX 102.	 230 V  250 W  16.000 ^{max}  BOX	29 290

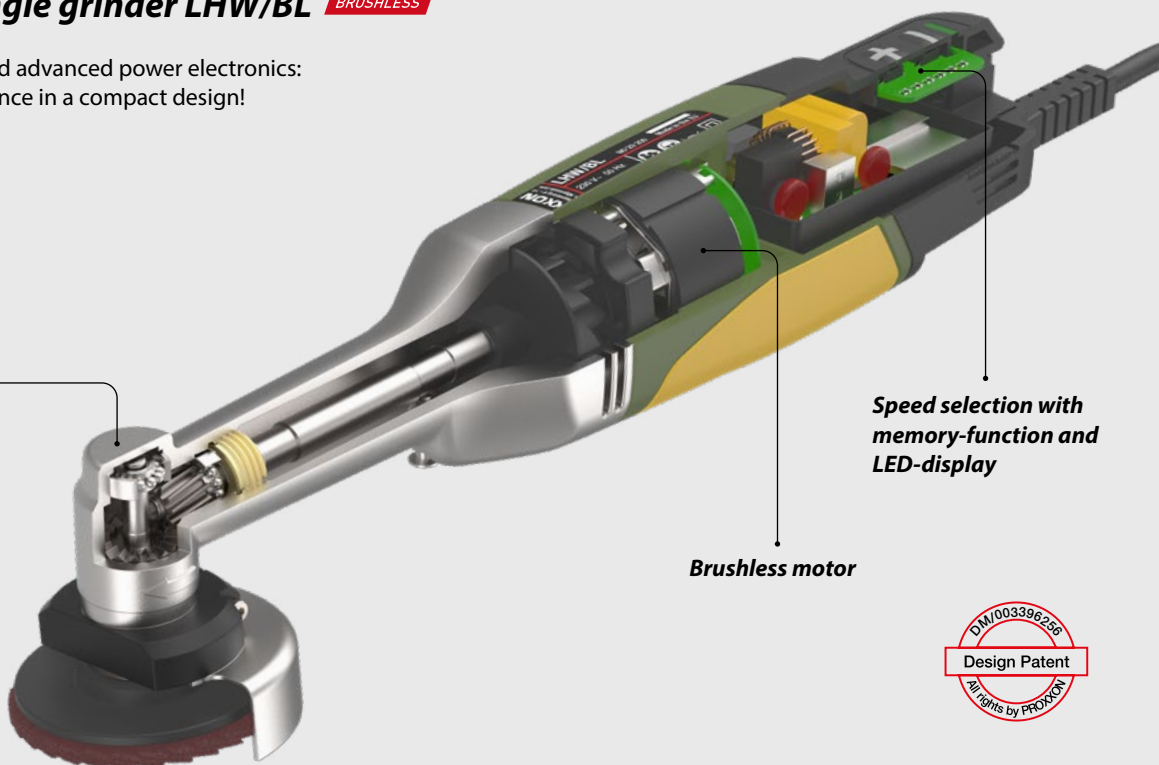


Longneck angle grinder LHW/BL BRUSHLESS

Brushless motors and advanced power electronics:
maximum performance in a compact design!

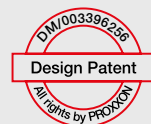
NO 29 202

Patented
angle gear box



Speed selection with
memory-function and
LED-display

Brushless motor



LONGNECK LHW

Longneck-Set BRUSHLESS

The performance duo for tile contractors!

The two longneck models LHW/BL and LWB/BL in proven L-BOXX system. With a high-quality form insert. Plenty of space for accessories.

NO 29 290 Високопроизводителното дуо за майстори на плочки!
Двата модела с дълга шийка LHW/BL и LWB/BL в доказана система L-BOXX. С висококачествена вложка за оформяне. Много място за аксесоари.

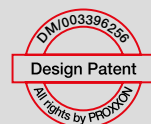


NO 29 817
(without battery
and charger)



Longneck
angle grinder
LHW/A

NO 29 815



LHW/A Solo

Without battery and charger
in cardboard box.

NO 29 817



LHW/A

Comes with battery and
charger in a practical
case.

NO 29 815





Tungsten carbide cutting disc

For cutting wood (flooring, door frames, skirting boards), joint mortar and plaster. Drilled holes for improved cooling and visibility. Thickness 1.3 mm.

NO 28 556



Tungsten carbide rasp- and cutting disc

For working on wood (floors, door frames, skirting boards), grout and plaster. Holes for better cooling and visibility. Thickness 3.0 mm.

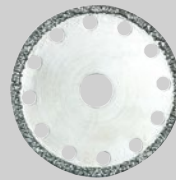
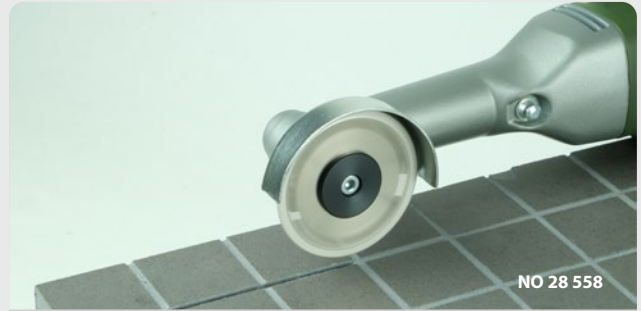
NO 28 559



Cutting disc with Diamond Turbo Rim

For very fast, rough cuts in natural stone (granite, marble), porcelain stoneware and ceramic materials. Thickness 1.7 mm.

NO 28 157



Diamond-coated cutting disc

For fast cutting and thin grout removal in porcelain stoneware, natural stone (granite, marble), joint mortar, ceramic materials, glass. Holes for better cooling and visibility. Thickness 1.2 mm.

NO 28 558



Diamond-coated roughing disc

For grinding and profiling, grout removal. For tiles, grout, glass. Holes for better cooling and visibility. Thickness 2.1 mm.

NO 28 557



Diamond-coated fine cutting disc

Thin, clean cuts in ceramic materials, glass. Holes for better cooling and visibility. Thickness 0.8 mm.

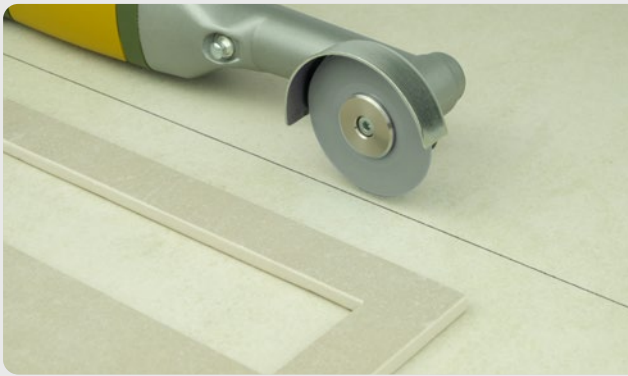
NO 28 158



Corundum bound cutting disc

For cutting steel and non-ferrous metals. Woven reinforcement. Thickness 1,0 mm. Ø 50 mm. 5 pieces.

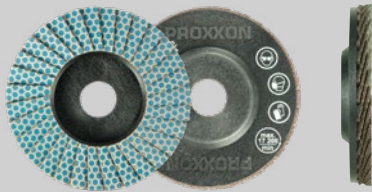
NO 28 155



Diamond-coated cutting disc UNI Cut 50

Fast, thin, clean cuts. All-rounder. For porcelain stoneware, natural stone (granite, marble), ceramic materials, glass. With surface diamond coating (10 mm). Thickness 0.9 mm.

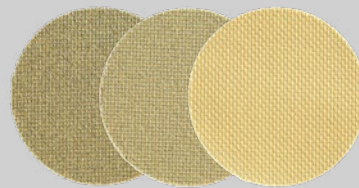
NO 28 156



Diamond-coated flap discs

Sanding of cutting edges, breaking of edges and creation of clean chamfers in porcelain stoneware, natural stone (granite, marble), ceramic materials and glass. Optimised tool geometry for perfect corner sanding. Ø 50 mm. 2 pieces.

- NO 28 166** Grit 60
- NO 28 167** Grit 120
- NO 28 168** Grit 200



Diamond sanding discs

For sanding and polishing cutting edges and chamfers. Also for breaking edges beforehand and creating clean chamfers. For porcelain stoneware, natural stone (granite, marble), ceramic materials, glass. Self-adhesive.

- NO 28 675** Grit 120
- NO 28 676** Grit 200
- NO 28 677** Grit 400

Precision vice FMZ

Rotates in all directions.

Easily clamps to workbenches and tables of up to 60mm. Alternatively, use 2 standard screws to secure to the work surface. Ball and socket: rotates in all directions (even downwards). 75 mm jaws with protective covers (for delicate workpieces). Maximum clamping width 70 mm and weight 1.6 kg.

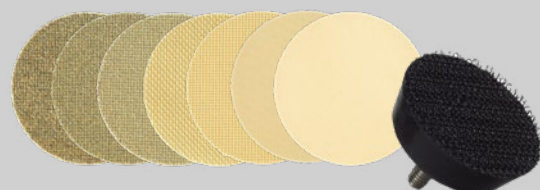
NO 28 608



Set of diamond sanding discs

One disc each of grit 60 – 120 – 200 – 400 – 800 – 1500 – 3000. Including one foam backing pad.

NO 28 679



Basic-Set LBX/A

Professional starter set with two Li/A2 batteries and one LG/A2 charger.

In proven L-BOXX-system. With thermoformed insert for two cordless tools.
For a customised selection of two cordless tools for applications such as stone and tile treatment, metal construction, for the automotive sector, car body shops, welding, interior work or maintenance.
Plenty of space for accessories.

Technical data:

Rapid charger 100 - 240 V.
50/60 Hz. Output 12.6 V, 2 A.
Weight 340 g. Battery 10.8 V. 2.5 Ah.
Length 85 mm. Weight 180 g.

NO 29 900



Lithium-ion battery Li/A2

For powerful operation of our MICROMOT cordless tools.
With integrated temperature control for safe operation.

Technical data:

10,8 V. 2,5 Ah. Length 85 mm. Weight 180 g.

NO 29 896

Rapid battery charger LG/A2

Recommended for charging the lithium-ion battery Li/A2.
Also compatible with the Tabless battery Li/TL3. Integrated temperature monitoring.

Technical data:

Input 100 - 240 V, 50/60 Hz.
Output 12.6 V, 2 A. Weight approx. 340 g.

NO 29 880





Basic-Set LBX/TL3

Professional starter set with two Li/TL3 batteries and SuperCharger SC.

In proven L-BOXX-system. With thermoformed insert for two cordless tools. For a customised selection of two cordless tools for applications such as stone and tile treatment, metal construction, for the automotive sector, car body shops, welding, interior work or maintenance. Plenty of space for accessories.

Technical data:

SuperCharger SC 240 V. 50/60 Hz.
Output 12.6 V, 8 A. Weight 380 g.
Battery 10.8 V. 3.0 Ah.
Length 85 mm. Weight 180 g.

NO 29 905



BASIC SET LBX/TL3



Lithium-ion battery Li/TL3

High-performance battery with tabless technology for the most demanding applications.

Particularly suitable for energy-intensive tools such as LHW/A. Designed for high charging currents and therefore short charging times. Reaches approximately 95% of its capacity in the SuperCharger SC after around 15 minutes. Increased efficiency thanks to reduced heat loss and delayed safety shutdown in the event of overheating.

Technical data:

10,8 V. 3,0 Ah. Length 85 mm. Weight 180 g.

NO 29 894

SuperCharger SC

For lightning-fast charging!

Charges the Tabless Li/TL3 battery from 0 to approximately 95% of its capacity in around 15 minutes. With active cooling and intelligent temperature monitoring. Housing prepared for wall mounting. Not compatible with the Li/A2 battery.

Technical data:

240 V. 50/60 Hz.
Output 12,6 V, 8 A. Weight 380 g.

NO 29 882

